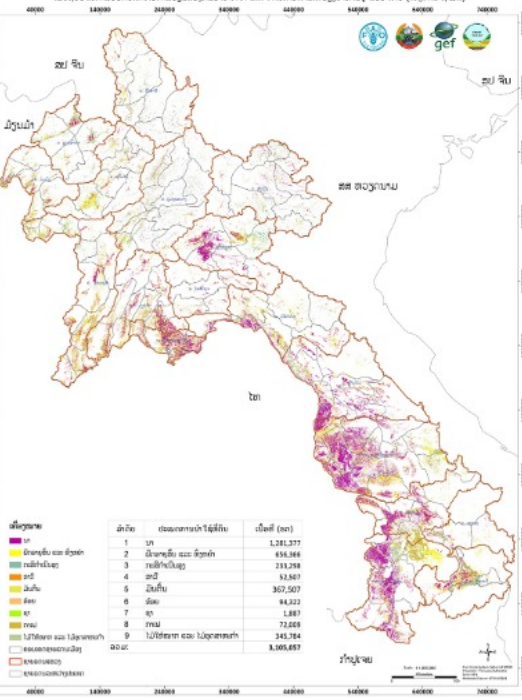


ລະບົບອ້າງອີງທາງຕຳແໜ່ງ

Description	Contacts	Content	Attributes	Metadata	Spatial
Spatial reference:	WGS_1984_UTM_Zone_48N				
Spatial representation type:	vector				
Distribution format:	Shapefile - ESRI ArcCatalog 9.3.0.1770				
Geographic location:					
East bounding longitude:	107.64654				
North bounding longitude:	16.19152				
South bounding longitude:	15.02981				
West bounding longitude:	106.29761				
Scale:	1:0				
Dataset quality:					

ແຜນທີ່ ຄວາມປົກຫຸ້ມກະສິກຳ ໃນ ສປປ ລາວ (ປີ 2018)

ສ້າງໂດຍ ກົມປູກຝັງ ແລະ ທີ່ນາຂາດໃນເຂດສິກາ (ໜ້າກ) ຂອງກົມປູກຝັງແລະທີ່ນາຂາດຂອງສະຫະລາດ ແລະ ການປູກຝັງແລະທີ່ນາຂາດຂອງສະຫະລາດ ມີລາຍຮັບ ໃນການປູກຝັງແລະທີ່ນາຂາດ ແລະ ການປູກຝັງແລະທີ່ນາຂາດ ຂອງ ສປປ ລາວ (ໂຮງກາ ສປປ ລາວ)



CDE Metadata Editor

Title: Current Land Use National of Laos year-2010

Abstract: This dataset shows the current land use from an agricultural forestry perspective. The base for the dataset was a visual interpretation of SPOT satellite images (resolution, 30m) from 2002. This information has then been updated by further...

Project code: **Project description**

Dataset language: **States**: **Dataset edition**:

Dataset Date: **Dataset reference date**: 2010-09-18 **Date type**: creation

Security Constraints: **Security Level**: Level 1: Public **Access constraints**: unclassified **Use constraints**: unclassified

CDE Metadata Editor

Who created the dataset?: **Who edited the metadata?**: **Distribution contact?**

Contact Details: **Email address**: **Position of the responsible person**: **Contact organisation**: **Address**: **Voice number**: **Postal code**: **City**: **Fax number**: **Country**: **State or province**: **Online resource URL**:

CDE Metadata Editor

Topic category: **Keywords**: **Additional information**: **Dataset character set**:

ຂໍ້ມູນຂອງຂໍ້ມູນ

METADATA



ກະຊວງກະສິກຳ ແລະ ປ່າໄມ້
ກົມຄຸ້ມຄອງ ແລະ ພັດທະນາທີ່ດິນກະສິກຳ
ສູນສຳຫຼວດ ແລະ ອາງແຜນນ້ຳໃຊ້ທີ່ດິນກະສິກຳ
ໂທ: 021 770075,
ແຟກ: 021 770075

ສາລະບານ:

- ຂໍ້ມູນທີ່ດິນກະສິກຳ 4,5 ລ້ານ ຮຕ
- ຂໍ້ມູນຄວາມປົກຫຸ້ມທີ່ດິນກະສິກຳປີ 2018



Metadata ແມ່ນຫຍັງ?



Metadata ພາຍເຖິງລາຍຂໍ້ມູນລະອຽດຂອງຂໍ້ມູນ ເຊັ່ນ: ຈຸດປະສົງຂອງການສ້າງ, ວິທີການສ້າງ, ວັນເດືອນ, ປີ ຂອງການສ້າງ, ເງື່ອນໄຂການນໍາໃຊ້ຂໍ້ມູນ ຜູ້ສ້າງຂໍ້ມູນ, ຜູ້ຮັບຜິດຊອບຖານຂໍ້ມູນ, ບ່ອນຕິດຕໍ່ຂັບຂໍ້ມູນ, ເລີ່ມເປັນຕົ້ນ ເພື່ອເປັນບ່ອນອີງໃນການຕັດສິນໃຈ ແລະ ວິເຄາະການນໍາໃຊ້ຂໍ້ມູນ.

Metadata ລະບົບ ISO 19139 Standard and Underlying CDE ISO 19139 profile ປະກອບມີລາຍລະອຽດດັ່ງນີ້: 1) ຂໍ້ມູນຖົ່ວໄປ; 2) ຂໍ້ມູນຕິດຕໍ່ພົວພັນ; 3) ຊຸດຂອງຂໍ້ມູນ; 4) ເງື່ອນໄຂໃນການແຈກຢາຍ ແລະ ນໍາໃຊ້; 5) ລາຍລະອຽດຂອງຕາຕະລາງ.



ຕາລາງ: ເພື່ອທີ່ຈັດສັນທີ່ດິນກະສິກໍາ ຮອດປີ 2025 ແລະ ວິໄສທັດ 2030 ຢູ່ ບັນດາທົ່ງພຽງ, ພູພຽງ ແລະ ພູດອຍ ໃນທົ່ວປະເທດ

ປ/ດ	ປະເພດລາຍນໍາໃຊ້ທີ່ດິນກະສິກໍາ	ເນື້ອທີ່ (ເຮັດ)					ເນື້ອທີ່ (ເຮັດ)	ເນື້ອທີ່ (%)	
		7 ທົ່ງພຽງ	16 ທົ່ງພຽງ	12 ທົ່ງພຽງ	ຂອບເຂດພູຜຸ່ນ	3 ພູ			
	ປະເພດລາຍນໍາໃຊ້ທີ່ດິນກະສິກໍາ	1,127,836	209,376	58,079	2,047,096	129,263	971,326	4,500,000	9,00
1	ນິເວດເປັນເຂດອະນິດເສົາ	1,096,388	197,094	6,384	425,307	29,361	82,168	2,000,000	6,45
2	ນິເວດເປັນເຂດປູກພືດແລະ ພືດໂຫຼມຜາ	89,091	92,366	2,304	719,318	64,292	100,668	1,000,000	4,22
3	ນິເວດເປັນເຂດ ຫຼັງສາຍຊ່ອງສິດ	58,793	37,810	4,166	260,740	33,796	404,539	800,000	3,38
4	ນິເວດເປັນເຂດ ຫຼັງສາຍຊ່ອງສິດ	4,794	2,078	385	241,956	6,335	441,004	700,000	2,96
5	ນິເວດເປັນເຂດລ່າງສິດ	1,242,780	43,430	7,287	6,198,496	162,617	11,637,303	36,100,000	81,00
6	ນິເວດເປັນເຂດລ່າງສິດ ແລະ ສາຍນໍ້າ	404,000	4,740	385	619,400	6,000	6,000	110,000	6,70
7	ລາຍລະອຽດ	2,370,816	252,816	22,166	8,253,183	291,660	12,508,317	23,400,000	100,00

ພາບລວມຂອງສ້າງ Metadata ຂໍ້ມູນທີ່ດິນກະສິກໍາ 4,5 ລ້ານ ຮຕ.

CDE Metadata Editor

About this wizard

- General information
- Contacts
- Dataset content
- Transfer options
- Attributes
- Metadata information
- Spatial characteristics

CDE Metadata Editor

This Editor was designed to edit ISO 19139 standard metadata. Metadata is stored respecting the underlying CDE ISO 19139 profile.

Editor is divided in several sections.

- General information about the dataset (e.g. title, abstract)
- Contacts: information about persons that edited dataset, metadata or that are designated as distributor contact
- Content: Keywords, Topic category.
- Attributes: information about feature Attributes and their quality
- Metadata information about the standard, file identifier, metadata language and character set.
- Spatial characteristics: Spatial references system, geographic extent and dataset quality.

Use table of content or Next/Back buttons to navigate between sections.

Do not show this page the next startup

ລາຍລະອຽດຂອງຂໍ້ມູນຖົ່ວໄປ

CDE Metadata Editor

About this wizard

- General information
- Contacts
- Dataset content
- Transfer options
- Attributes
- Metadata information
- Spatial characteristics

General information

Title: Corner Land Use National of Laos years 2010

Abstract: This dataset shows the current land use from an agricultural forestry perspective. The base for the dataset was a visual interpretation of SPOT satellite images (resolution: 30m) from 2002. This information has then been updated by further visual interpretation of ALOS Satellite images from 2009 (resolution 10m). The resulting dataset has been further checked and updated overag field visits in the district.

Project code: [] Project description: []

Dataset language: en Status: completed Dataset edition: []

Dataset Date: [] Dataset reference date: 2010-09-18 Date type: creation

Security Constraints

Security Level: Level 1 Public Access constraints: unclassified Use constraints: unclassified

ຂໍ້ມູນຕິດຕໍ່ ເພື່ອສອບຖາມ ແລະ ແລກປ່ຽນຂໍ້ມູນ

CDE Metadata Editor

Who created the dataset? Who edited the metadata? Distribution contact?

Show details Show details Show details

About this wizard

- General information
- Contacts
- Dataset content
- Transfer options
- Attributes
- Metadata information
- Spatial characteristics

Contact Details

Email address: []
 Contact Details: []
 Contact Details: []

Transfer options: []
 Position of the responsible person: []
 Attributes: []
 Metadata information: []
 Spatial characteristics: []

What is the contact persons role? Country: [] State or province: []
 Online resource URL: [] Name of online resource: []

ຂໍ້ມູນເພີ່ມເຕີມໃນຊຸດຂອງການສ້າງຂໍ້ມູນ

CDE Metadata Editor

About this wizard

- General information
- Contacts
- Dataset content
- Transfer options
- Attributes
- Metadata information
- Spatial characteristics

Additional information

Topic category: environment
 Keywords: boundaries

This dataset shows the current land use from an agricultural forestry perspective. The base for the dataset was a visual interpretation of SPOT satellite images (resolution: 30m) from 2002. This information has then been updated by further visual interpretation of ALOS Satellite images from 2009 (resolution 10m). The resulting dataset has been further checked and updated overag field visits in the district.

ຮູບແບບຂອງ Metadata

Description	Contacts	Content	Attributes	Metadata	Spatial
Metadata language:				en	
Metadata file identifier:				0893F6FA-6F87-4803-8298-FE64872939D4	
Metadata standard name:				ISO 19115 Geographic Information - Metadata	
Metadata standard version:				ISO/TC 211 D15 19115	
Metadata character set:				utf8	
Metadata last modified:				2017-01-19T18:30:02	